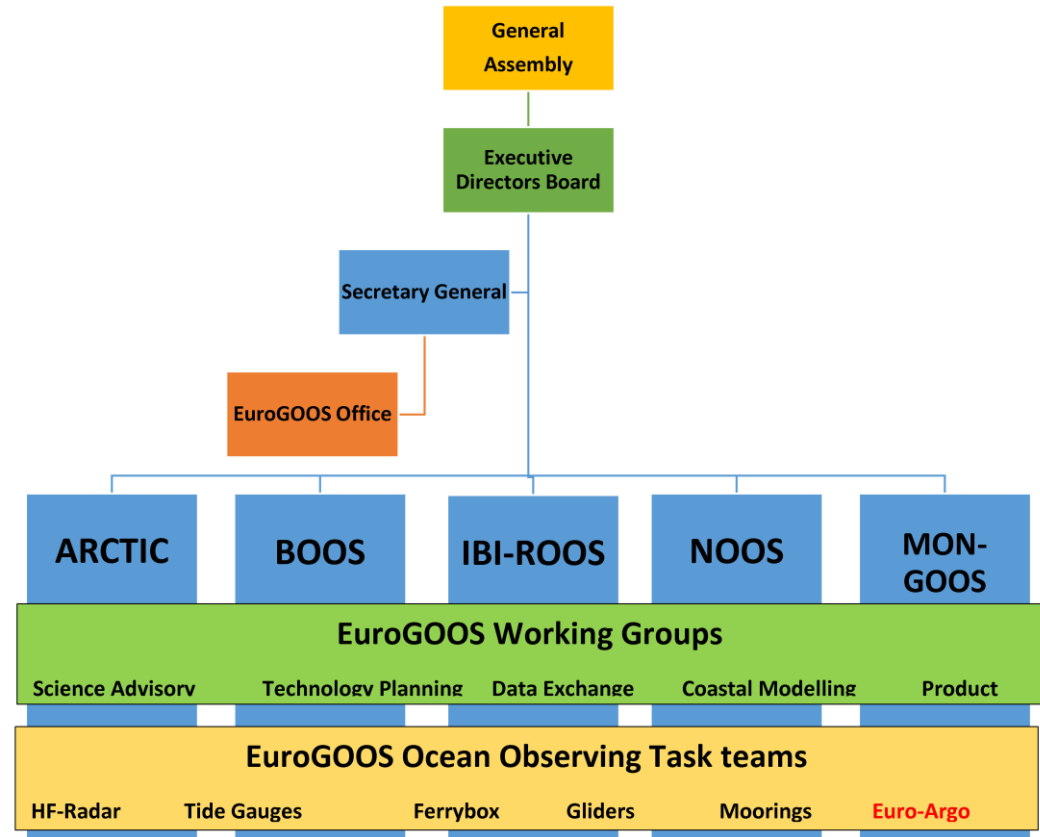


Structure

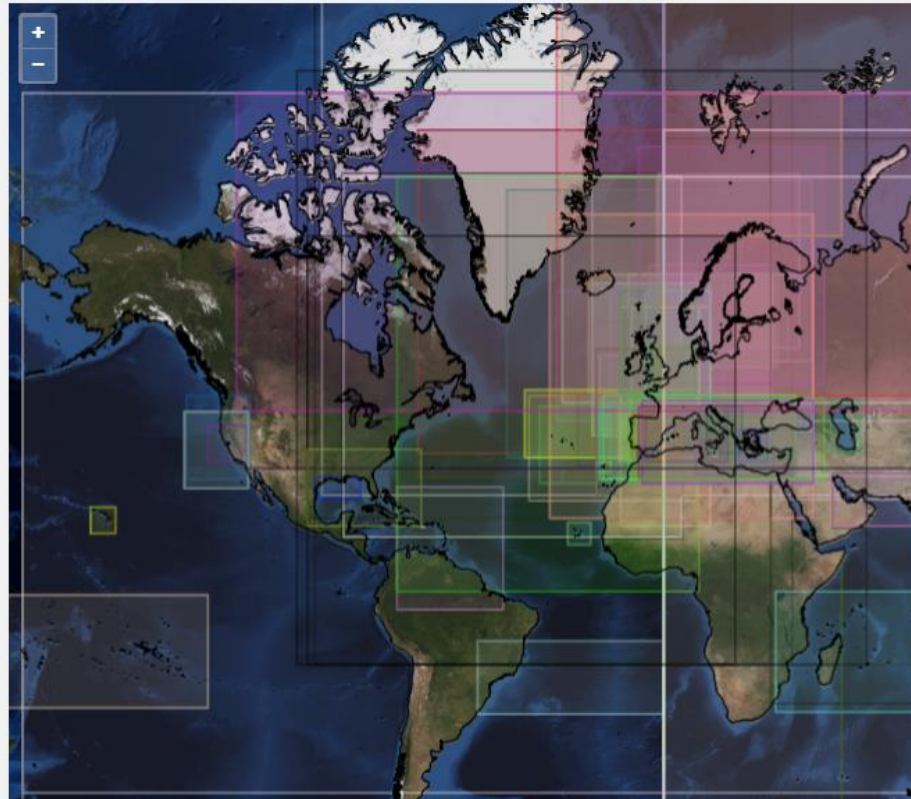
- ✓ Strategies and actions are decided by an General Assembly and the Executive Directors
- ✓ Actions are carried out by the EuroGOOS Office, the Board, the Chair and the members/partners.
- ✓ Development of O.O. systems is carried out by the Regional Systems
- ✓ Working groups produce strategies, priorities and standards for O.O.
- ✓ Ocean Observing Task Teams organizes and develops the individual observation communities and foster cooperation





The information on this page is based on a modelling inventory made by the GOOS Regional Alliances (GRAs). The information has been provided by modelling experts in the respective GRAs.

- Black Sea GRA
- EuroGOOS
- IMOS
- IOGOOS
- MONGOOS
- PI-GOOS
- US IOOS



Summary
Number of models: 77
Parameters
<ul style="list-style-type: none">• Significant wave height Wave direction Wave period: 1• Water temperature: 1• sea surface temperature: 1• salinity: 25• sea surface height: 1• and sea-ice concentrations.: 1• Seafloor depth Topographic elevation (land): 1• wind velocity and direction: 1• wave height: 1• period and direction: 1• direction and height of primary and secondary swell: 1• 3D temperature: 1• zonal and meridional currents: 1• 2D surface height: 1• water level: 1• currents: 22• temperature: 6• and/or salinity*: 1• SST: 1• SSH: 1• MOM4P1: 1• water level: 4• Significant wave height and direction: 8• swell wave height: 8• mean wave period (Tm-1): 1• 0): 1• sea surface elevation and transport: 3• peak wave direction: 7• mean wave period: 7• Predicted surge: 1