

DATA-MEQ working group report

*P Gorringe, S Pouliquen & DataMEQ Working
group*

Eurogoos Annual meeting
Hamburg November 2012



Terms of Reference

1. *Develop an overall concept for the management of EuroGOOS observation data taking into consideration data management systems which are developing within GMES and JCOMM*
2. *Identify, in consultation with the EuroGOOS ROOSs, as appropriate, the type of observations which can be made available either in real-time or in delayed mode*
3. *Propose the most effective ways to make observation data readily available for operational purposes in a sustained matter*
4. *Propose mechanisms to ease access to delayed mode observation data in cooperation with NODCs, keeping aware of the progress in SeaDataNet*
5. *Draft a minimum set of standards for data quality control which is related to observation data collection, processing and exchange procedures*



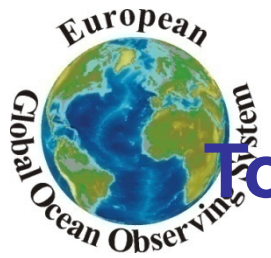
2012 status

- No formal meeting of the DATA-MEQ WG was organized
- Activities were carried out within the EuroGOOS ROOSs together with the MyOcean, SeaDataNet and EMODnet Physics projects
- Activities presented at the EEA GISC (GMES In Situ Coordination) meeting in Copenhagen



What has been enhanced in 2012

- Consolidation of regional servers for Real-Time service
- Interoperability between MyOcean, ROOSs and SeaDataNet has been strengthened
- EMODnet Physical portal is providing Discovery and Viewing service on data from MyOcean, ROOSs and SeaDataNet
- Work towards common temperature & salinity products for reanalysis purposes between MyOcean and SeaDataNet



Towards common T&S product for reanalysis

Both MyO and SDN are working on aggregated temperature and salinity products for the past 25 years of data. The two projects have joined efforts to build these products

- **MyOcean** for reanalysis purposes
 - Started from MyOcean INS TAC partners databases
 - Extending with ROOSs partners data
- **SeaDataNet** for demonstrating the value of the SeaDataNet infrastructure and to produce regional aggregated products from the SeaDataNet network providing the "best copy" (removing duplicates) for core set of parameters (starting T&S)

This will also demonstrate the complementarity of the two infrastructures and contribute to show the importance of sustaining them



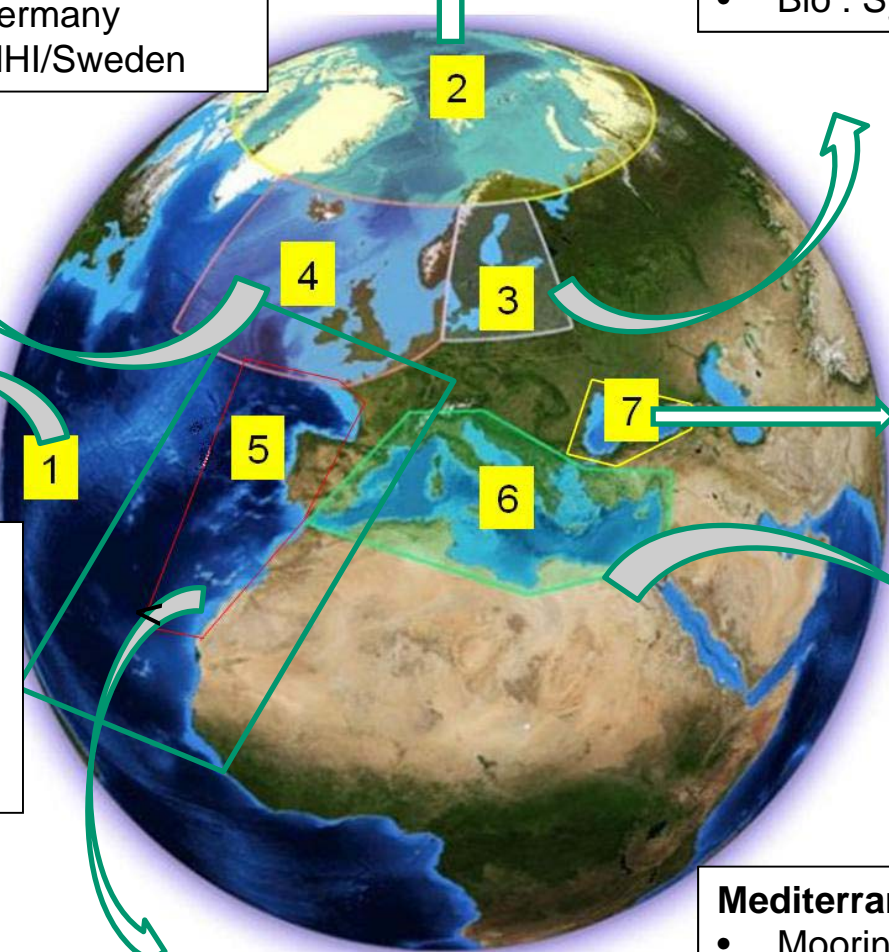
Arctic: IMR / Norway

North West Shelves: BSH/Germany

- Temp & Salinity : BSH/Germany
- Current & Sea Level: SMHI/Sweden

Baltic Sea: SMHI/Sweden

- Temp & Salinity : BSH/Germany
- Current & sea Level: SMHI/Sweden
- Bio : Syke/Finland



Black Sea IOBAS/Bulgaria

Global Ocean : Coriolis/France

- Link with international networks: Coriolis/France
- European Vessels: NIVA/Norway

South West Shelves: Puertos Del Estado/Spain

- Mooring : PdE
- Underway data: Coriolis/France

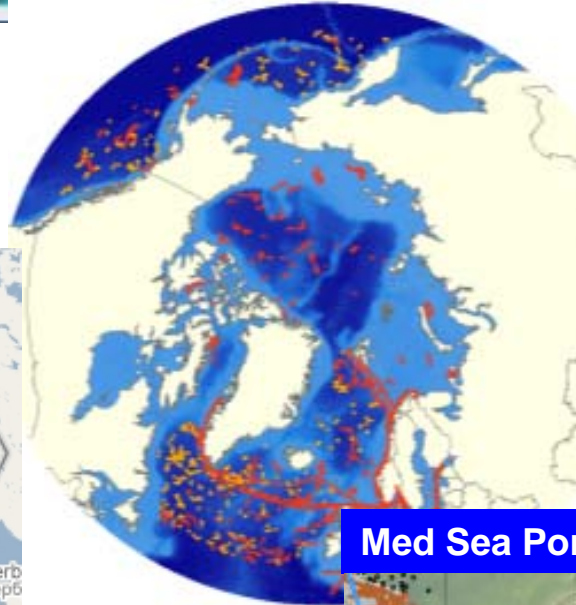
Mediterranean Sea : HCMR/Greece

- Mooring : HCMR/Greece
- XBT/CTD: ENEA/Italy
- Drifter & Argo: OGS/Italy
- Glider and Argo: Coriolis/France

NOOS Portal



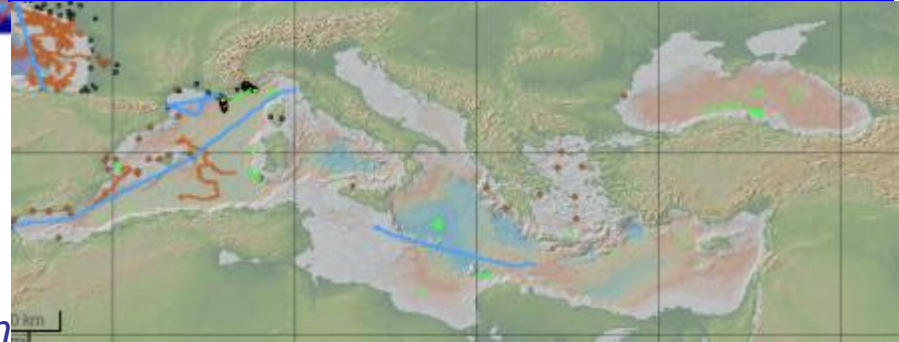
Arctic Portal



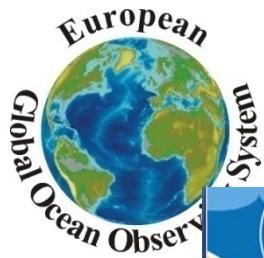
IBI Portal



Med Sea Portal



Black Sea Portal



EMODnet-Physics Portal

EMODnet European Marine Observation and Data Network

Pilot Portal For Physical Parameters

EMODnet Map

Search point: -

Search region:

Data type

Fixed station

- Near Real Time
- Historical

Ferrybox

- TransPaper
- FMLW (Armorique)
- FNP (Pont Aven)
- MS Trans Carrier
- Olympic Champion
- MS Funny Girl
- LysBris
- TorDania
- MV Hascosay
- MS Vesteralen
- MS Color Fantasy
- MS Baltic Princess
- Norrona
- MS Romantica

Parameters

Sea Basin (EuroGOOS Region)

Countries

Data Providers

Your selection

25°00'W 20°00'W 15°00'W 10°00'W 05°00'W 00°00'E 05°00'E 10°00'E 15°00'E 20°00'E 25°00'E 30°00'E 35°00'E 40°00'E



Difficulties

- **Use the same standards** (from theory to reality)
 - Link the SDN platform ID to the MyOcean one
 - Use the same institution code : homogeneity between the Institute used at ROOS level and at NODC level : the main Institute, a lab within an institute,...
- **Viewing service:** easier to access and plot RT/NRT data than historical (work in progress)
- **Downloading:** need to agree on a common data policy and share user directories



DATA-MEQ relation to major projects

- **MyOcean** for real-time data stream
- **JERICO** for Coastal data,
- **GROOM** for Glider,
- **PERSEUS** for Med Sea
- **SeaDataNet** and **MyOcean** for building historical products for reanalysis purposes
- **SeaDataNet** for standard improvements
- **EMODnet Physics** to be interoperable with the EMODnet portal



Challenges and Problems

- **Keep the coherency** between developments made in various projects and avoid duplication of efforts on services we would like to be sustained in the future
- **Be aware of achievements** reached in projects or at national level on which we can use for the benefit of data management activities within EuroGOOS
- **Missing dedicated man power** to ensure the data management, exchange and QC coordination in relation with ROOSs and Projects



Data Exchange will only work in collaboration with ROOSs



EUROGOOS Annual meeting November 2012