

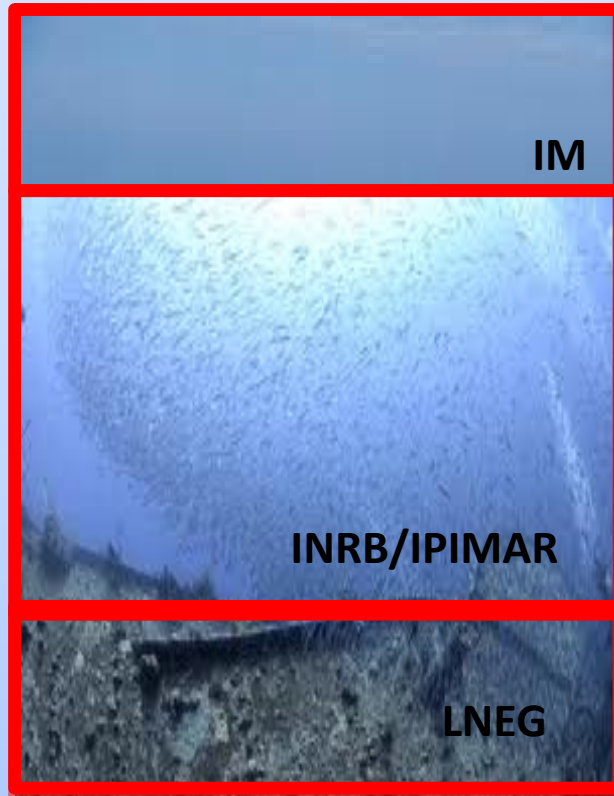
# THE PORTUGUESE INSTITUTE FOR THE OCEAN AND ATMOSPHERE

Nuno Lourenço  
nuno.lourenco@ipma.pt

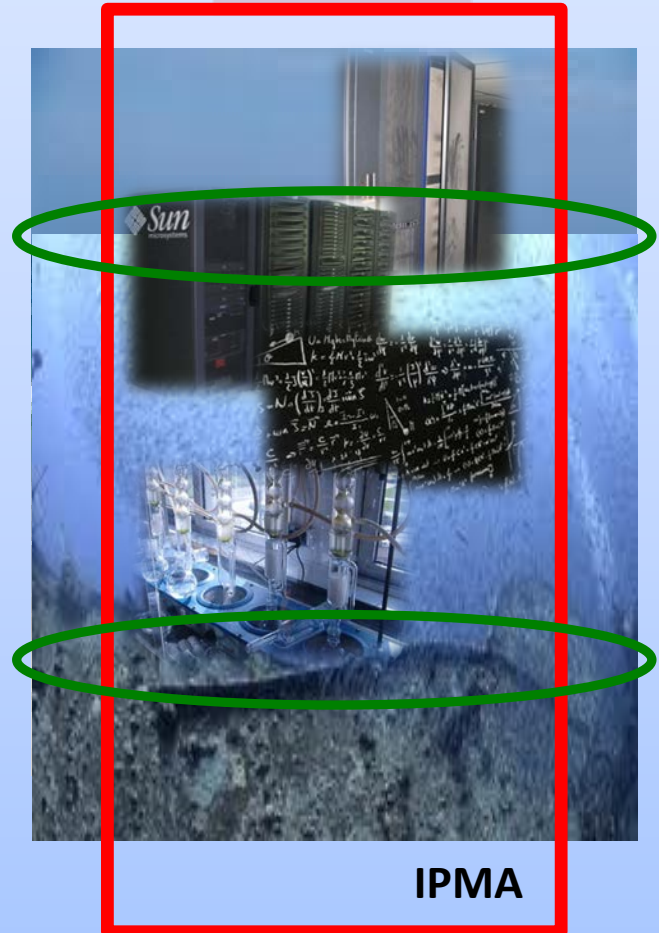


# 2012 – IPMA CREATION

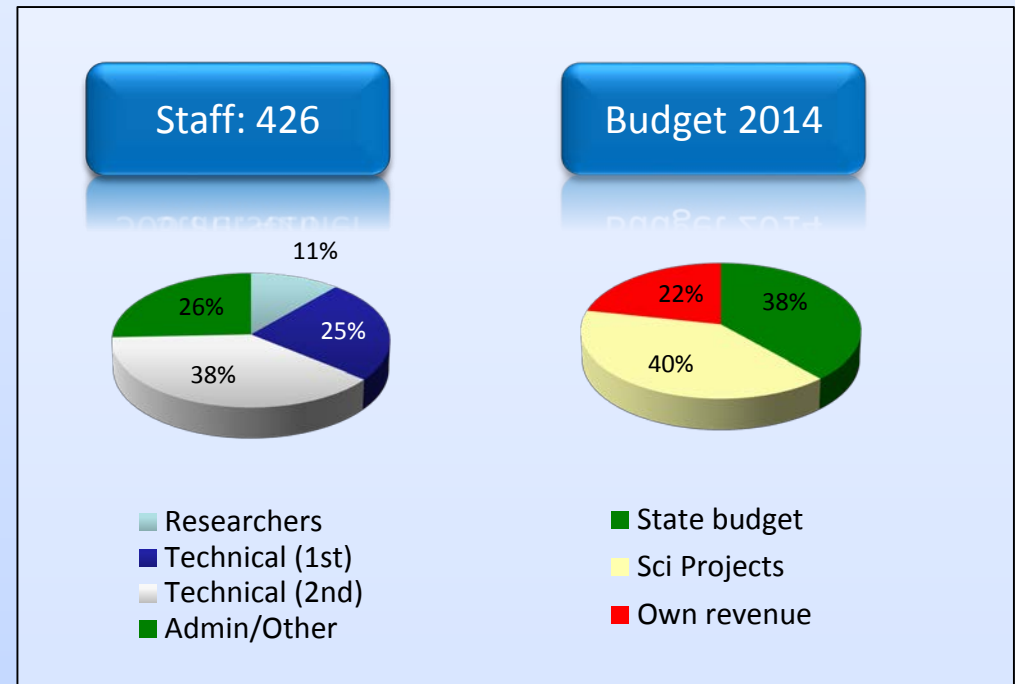
Before



Now

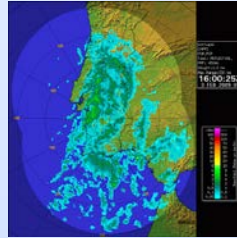


## SOME NUMBERS:

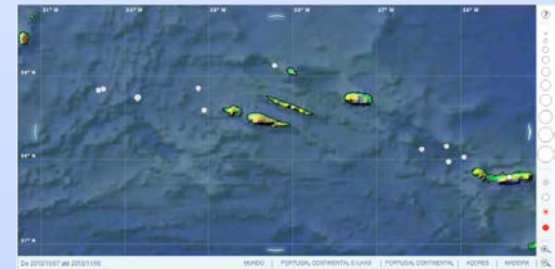
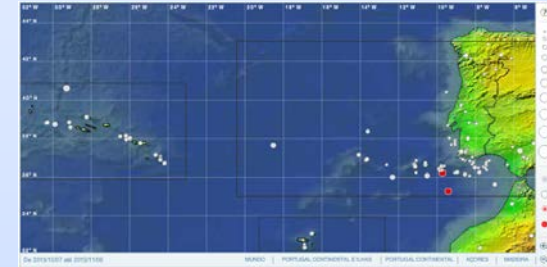


- Overall budget (2014) – 35 M€
- Over 74 research contracts and projects (13 FP7; 13 FEP; 12 Interreg; 37 FCT)
- Over 120 scholarships
- 98 Facilities and 6 regional centres on Portugal mainland, Madeira and Azores Archipelagos
- 150 sailing days IPMA cruises (2013); expected 300 sailing days (2014)
- 2 National reference Labs – Microbiology and Biotoxins

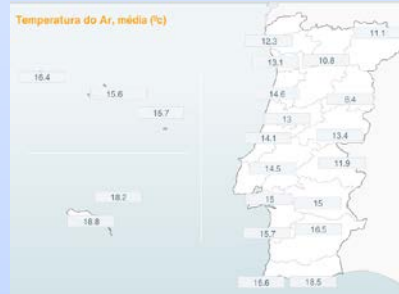
# IPMA LARGE SCALE INFRA-STRUCTURE



Meteorological  
Radar Network



Climatological and  
meteorological Networks



Seismological Network  
(Mainland and Islands)

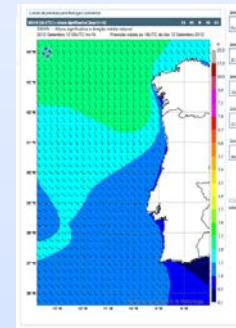
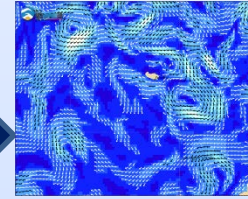


3 vessels  
(one regional, two coastal)  
New vessel due in 2015

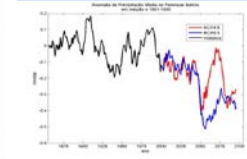
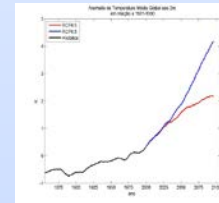
Pilot production aquaculture Facilities

## SCOPE OF ACTIVITIES:

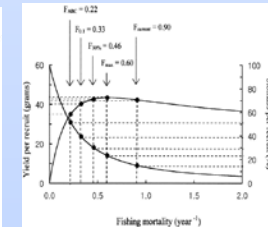
Weather and ocean forecasting,  
seismological monitoring, tsunami early  
warning systems and issue alerts



Paleo-climate, Climate change research  
and sectorial impacts



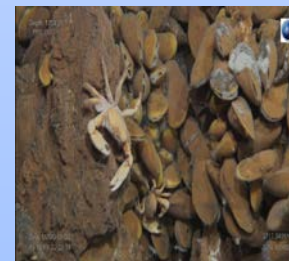
Aquiculture Pilot Experiments  
Classification of MPZ, status of MPZ  
Evaluation of fish Stocks (DCF under CFP)  
Economic valuation of related products



Marine Environment and  
Biodiversity (OSPAR, Natura  
2000, EU MSFD and water  
directives)



Non Living Resources,  
exploration and  
evaluation



Aeronautic meteorology

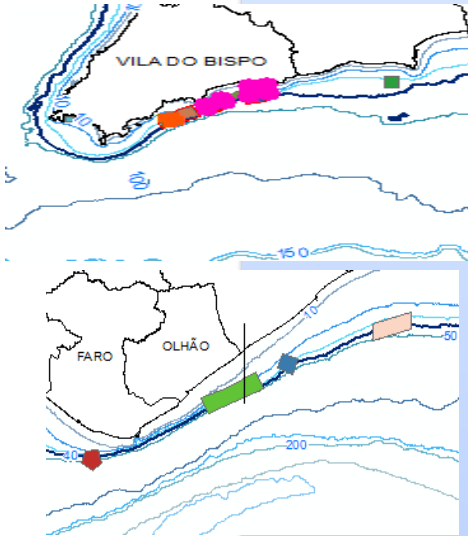




## EMOCEAN

### IPMA's observation and modeling operational system

To support offshore aquaculture, artisanal fisheries, MPAs and climate changes studies



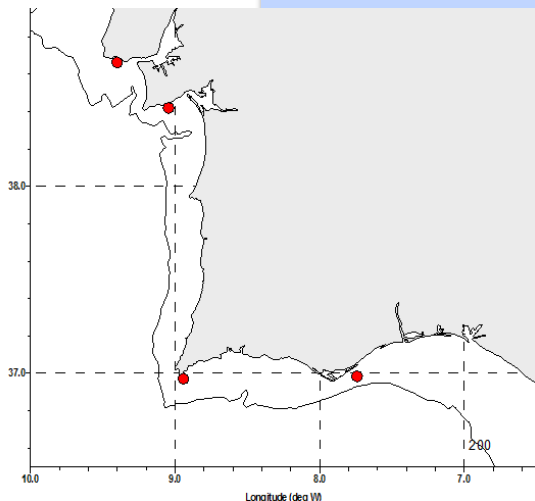
#### INSITU OBSERVATIONS – Coastal network is being designed

- Measurements (buoys and monitoring stations):
- Meteorological data (e.g., wind, air temperature, radiation)
- Oceanographic data (e.g., T, S, Chl-a, Currents)
- Nutrients
- Primary and secondary production
- Phyto- and Zooplankton

1ST STAGE (Sept 2014) – installation of two instrumented buoys in the Algarve (Tavira and Sagres)

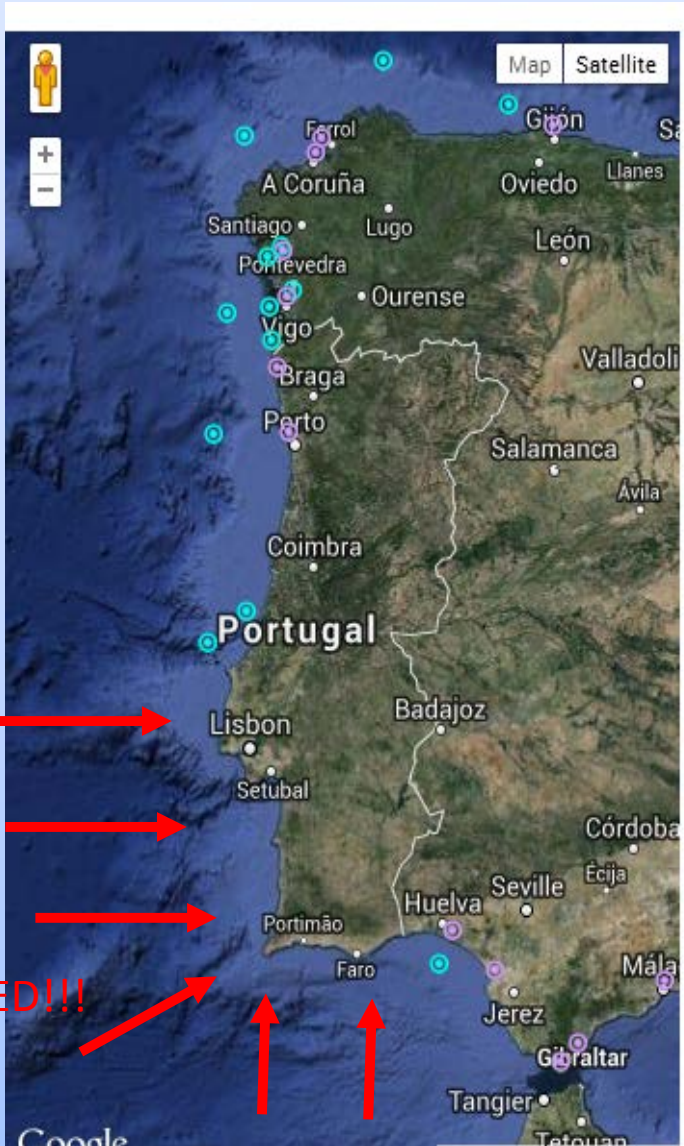
2nd STAGE (2015) – Installation of two instrumented buoys in Arrabida MPA and “Cascais Watch” station (monitoring site for the past 15 years – monthly basis)

Coastal Observation Network will be complementary and articulated with existing IHPT network



# PARTICIPATION ON EUROGOOS

## MYOCEAN PROJECT - IBI REGION (SWS) FIXED STATIONS VIEWING SERVICE



IPMA seeks to:

- Reinforce IBI-ROOS by covering existing spatial gaps of in-situ observations in the S and SW of Portugal
- Interact with the international community and benefit from their experience (lessons learned)

**IPMA HOPES YOU  
CONSIDER ITS  
APPLICATION TO  
EUROGOOS**

**THANK YOU !**